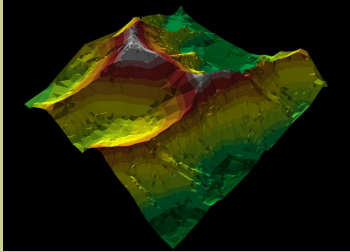


PlanMAP SQL®

Custom GIS Solutions



*PlanMAP SQL® is
custom GIS / Mapping
Software for municipal
land information
management*



IN-DEPTH DATA

Box 413597, Craighall, 2024

Phone: 082-393-0480

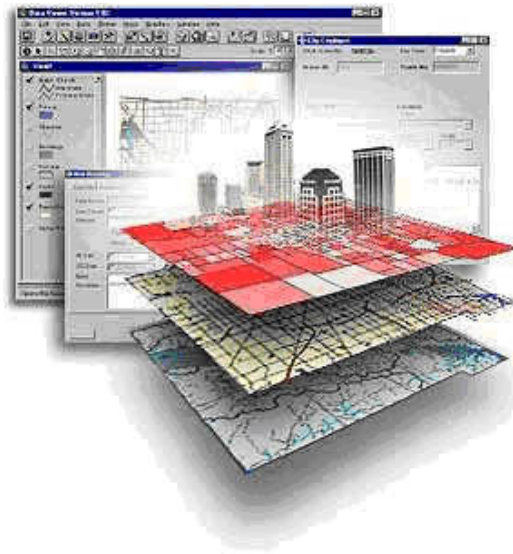
Fax: 086 660 0433

plannermunicipalsoftware.co.za



Since 1990, In-Depth Data has successfully been building municipal land information systems. Our flagship product, Planner Municipal Software™, has been effectively used to produce numerous municipal property registers and valuation rolls.

Since a property register is the first step in achieving a successful GIS implementation, In-Depth Data builds on its ePlanner™ success by providing customized GIS and mapping solutions. These solutions we call PlanMAP SQL®, include both desktop and web-based mapping technology. These solutions are designed to meet the customer specific needs. To this end, we build custom software solutions for our clients using technology appropriate to the task at hand.



We support the following cost effective GIS / Mapping software:

- AutoDesk MapGuide
- TatukGIS™
- CartoVCL™
- CartoWorld™
- MapInfo®
- And other leading brands

Contact In-Depth Data to discuss your specific needs.