

## PRODUCT FEATURES

### FILE FORMAT SUPPORT

AutoCAD DWG & DXF •  
Microstation • E00 ArcInfo  
Export • FME • GeoTiff •  
GML • GPX • GDL / OGR •  
JPEG • KML • MrSID •  
MapInfo Tab • MapInfo  
Mif/Mid • OpenStreetMap •  
SDTS • ESRI Shape • Tiger  
2000 • VPF 3.0 • WFS • and  
more...

### SPATIAL D/B SUPPORT

ESRI ArcSDE • ESRI Personal  
Database • Geomedia SQL  
Access Warehouse •  
Geomedia SQL Server •  
MapInfo SpatialWare •  
MSSQL Spatial Server •  
OpenGIS PostGIS spatial •  
OpenGIS SQL BLOB (Simple  
Features) • OpenGIS SQL  
Normalized (Simple Features)  
Oracle Spatial/Locator •  
TatukGIS SQL binary

### LICENSING

One license per computer and  
per user.

### OPERATING SYSTEM

Windows XP, Vista, 7 •  
System requirements are the  
same as for the Windows  
operating system.

## TatukGIS™ - The cost effective alternative GIS Solution

### COST EFFECTIVE DESKTOP MAPPING

The TatukGIS Editor is a general purpose, desktop GIS mapping and data editing application featuring support for dozens of vector, image, grid, and SQL database formats, on-the-fly map re-projection with nearly 3,000 pre-defined coordinate systems, GPS connectivity, compatibility with leading database engines... The Editor product is intuitive and learnable just from the integrated help files. For custom solution designers with specialized or advanced requirements, the built-in scripting IDE provides the means to customize or extend the product beyond its core features.

### VIEWING

The Editor opens most GIS/CAD vector map files, raster maps, aerial images, grid data, and SQL database layers such as Oracle Spatial or PostGIS coverages. The Editor also opens most ESRI ArcView v.3 or MapInfo Professional projects and projects exported from ESRI ArcGIS/ArcMap using the free Arc2TatukGIS plug-in. Each file type is supported "natively", so there is no need to import the data into any internal format.

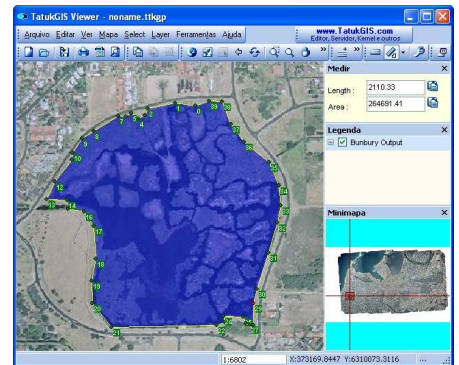
Comprehensive visual layer property and legend controls provide for deep customization of the appearance of each map layer, thematic mapping, layer hierarchies, legend presentation, scale...

### COORDINATE SYSTEMS

The Editor supports nearly 3,000 predefined map coordinate systems in use around the world (including all the U.S. State Planes) and user-defined coordinate systems based on 120 supported projections. Vector and raster layers can be converted on-the-fly between coordinate systems for map display or export. The support reflects EPSG codes and WKT coordinate system definitions.

### EDITING

The Editor provides advanced features to create, select, query, edit, store, and import/export the geometry and attributes of vector map files and SQL database layers, including editing the z and m values of 3D map files. The support is for so many data formats that some use the



Tools include the topology builder/corrector to systematically clear geometric errors (overlapping polygons, holes between polygons, missed line intersections, dangling nodes) from line or polygon layers.

### PROGRAMMING SUPPORT

The Editor is a fully scriptable IDE for writing and debugging code. Using Basic or Pascal scripts, the Editor functionality can be enhanced or modified, including full menu redesign, custom dialog boxes, etc., for end-user custom applications. The scripting engine exposes (inside the Editor) the full power of the TatukGIS Developer Kernel, with its hundreds of classes and thousands of methods, to fulfill the requirements of any kind of GIS application. A number of example scripts are provided, e.g., to perform Google Earth or Virtual Earth integration, GPS tracking on a projected map, batch (command line) conversions, and a number of tutorial examples.

### DATABASES

The Editor is compatible with leading database engines, e.g., MSSQL Server, MSJET, Oracle, DB2, Interbase, PostgreSQL... and most 3rd party SQL database map layer formats, e.g., OpenGIS, PostGIS, MSSQL Spatial Server, ESRI ArcSDE, ESRI SDE Raster, ESRI Personal Geodatabase, MapInfo SpatialWare, Oracle Spatial, Oracle GeoRaster, Geomedia SQL Server.... The Editor supports live joins and data import/export between map layers and external database tables.



**PLANNER MUNICIPAL SOFTWARE™**

[www.plannermunicipalsoftware.co.za](http://www.plannermunicipalsoftware.co.za)

## TECHNICAL SUPPORT

With 20 years experience, we have extensive experience in providing optimal support to our clients.

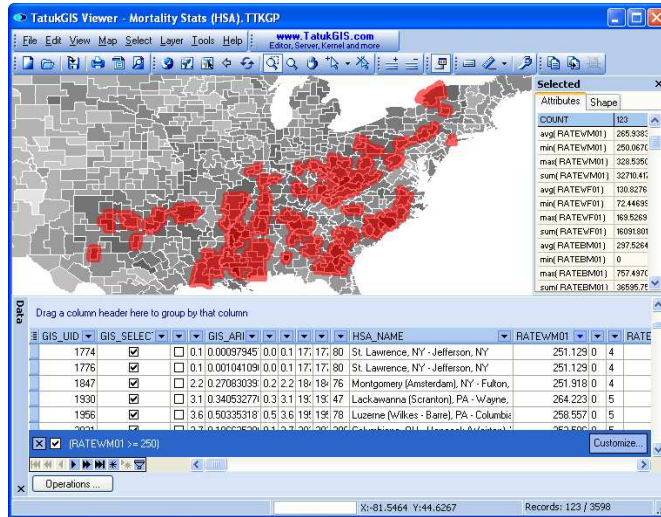
## COST EFFECTIVE

TatukGIS Editor™ can be deployed using SQL Server Express, a free edition of Microsoft's ubiquitous database software.

## CUSTOM GIS SOLUTIONS

We have extensive experience in building GIS solutions. Furthermore, Planner Municipal Software™ Desktop Edition integrates with the TatukGIS™ Editor.

For more information on any of our products or services please visit us on the Web at: [plannermunicipalsoftware.co.za](http://plannermunicipalsoftware.co.za)



## ADDITIONAL SERVICES AVAILABLE

- Data Acquisition
- Data Transformation
- Custom Software Development
- GIS Integration
- Support

## PRODUCT FEATURES

- Multiple vector file formats (layer types) in the same project
- Legend control (panel) to organize layers and layer priority
- Extended Legend for hierarchical layers, layer grouping, sub-projects
- MiniMap window with World or continent map tab options
- Visual layer property control for all aspects of the map appearance (colors, styles, polygon fills, outlines, symbols, labels, transparency, etc.)
- Open ArcView 3, ArcExplorer, MapInfo Professional project files and projects exported from ArcGIS/ArcMap using the free Arc2TatukGIS plug-in
- Custom render map geometry, styles, labels, symbols, etc. based on scale
- Manipulate pixel layers (brightness, transparency, histograms, etc.)
- Thematic mapping based on attribute values, colored-gradient value themes, color render grid layers
- CGM and TrueType symbols for points and lines; CGM, TrueType, and WMF symbols for fills
- Advanced attribute data presentation table with filtering and SQL Query Builder
- Spatial querying/selection (by point, line, circle, rectangle, polygon, buffer, custom clipboard layer, SQL query) based on the DE-9IM model (Dimensionally Extended 9 Intersection Model).
- Topological operations, e.g., buffers, intersections, unions, etc.
- Advanced labeling (Dynamic label placement, overlap avoidance, multi-field, formatted)
- HTML style rendering of labels
- Pie and bar charts
- Map hints to automatically display information about any feature under the cursor
- URL Hotlink feature to link map shapes via a URL to any web site, document, or mailto
- Multiple hotlinks to a single shape
- Open WMS/WFS (OpenGIS Web Map Service/Web Feature Service) map layers from a remote server
- Open ECWP map layer from a remote server
- R-tree spatial indexing for best performance with very large vector files
- Measurement tools for distance, area, and perimeter and scale bar
- View data collected with a GPS device as a GPX layer
- PDF file generation for high resolution local printing of any map view
- Template based printing with ability to add new print layouts
- Internet Server Wizard™ to set up simple ASP.NET projects for web publishing with the TatukGIS Internet Server
- 16 language options for program user interface
- Antialiased output for enhanced map rendering quality
- Nearly 3,000 pre-defined geographic coordinate systems (including all U.S. State Planes)
- On-the-fly re-projection of vector, raster, and grid layers between coordinate systems for real-time map display
- Export vector, raster, grid layers to new coordinate system
- Mosaic multiple already geo-referenced images into a single exported image file
- Unions and splitting of shapes & Merge vector maps into a single layer
- Topology builder/corrector to systematically clear geometry errors from vector map layers, e.g. overlapping polygons, holes between polygons, missed line intersections, dangling nodes
- Edit map geometry using COGO distance/bearing measurements
- Edit attribute names and field values of vector map files (can be performed via the data table)
- Edit vertices of vector map geometry
- Real-time GPS connectivity using NMEA standard
- Export layer geometry based on extent, selection, buffer, attribute query, shape type
- And more ....



**PLANNER MUNICIPAL SOFTWARE™**

[www.plannermunicipalsoftware.co.za](http://www.plannermunicipalsoftware.co.za)